

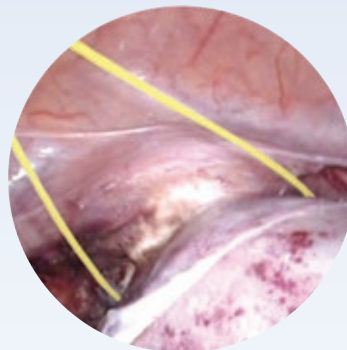


Innovation in Gynaecology

LiNA Gold Loop™

*Laparoscopic Supracervical
Hysterectomy and Myomectomy*

*- sections the uterus in
approximately 5 seconds!*



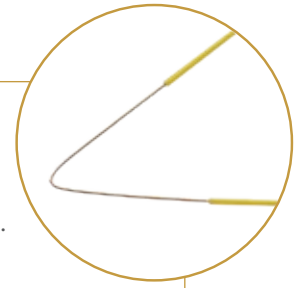
LiNA Gold Loop™

safe

Safe and precise sectioning

The LiNA Gold Loop allows for a unique and comprehensive view during positioning, cutting and coagulating.

- The surface remains clean and coagulated
- Coloured flex on loop wire optimizes visibility on the monitor



functional

Minimize procedure time

The LiNA Gold Loop is a safe and effective monopolar loop for sectioning of the uterus during Laparoscopic Supracervical Hysterectomy (LSH). Furthermore, the LiNA Gold Loop is ideal for removal of myomas located outside the wall of the uterus (subserous or pedunculated).

- Clean and effective cut

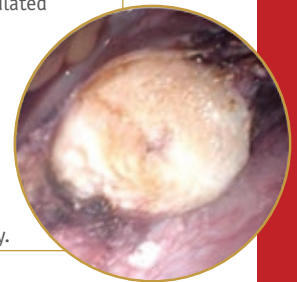
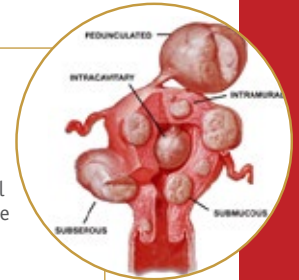
Traditionally, when performing an LSH the uterus is sectioned above the cervix using traditional cutting and coagulating instruments. The sectioning of the uterus usually takes between 10-30 minutes due to the difficulties in cutting near the cervix. The unique LiNA Gold Loop is specially designed to perform the same uterus sectioning in approximately 5 seconds! The monopolar loop performs a safe and precise sectioning of the uterus leaving the cervix with a clean and coagulated surface.

- Cut and coagulation in one single step

By setting the generator at a Blend mode, approximately 20% coagulation and 80% cut, 100-130 watt, the LiNA Gold Loop performs an optimum cut and coagulation during the procedure and thereby eliminates the necessity for post-coagulation of the surface.

- Ready and easy to operate

When the handle is pushed forward the loop opens and is ready for use. The rigid cannula optimizes manoeuvrability.



versatile

Unique monopolar loop for LSH and Myomectomy

- 3 loop sizes: (160mm x 80mm), (200mm x 100mm) and (240mm x 120mm)
- LiNA Gold Loop is available with 4mm and 8mm connectors, to fit any electro-surgical unit

Ordering Information:

LiNA Gold Loop™ **CE** 0459

REF.	Product	Packing
EL-160-4	LiNA Gold Loop™ - 5mm Monopolar Endoscopic Loop for Laparoscopic Supracervical Hysterectomy & Myomectomy. Dimensions of loop: 160mm x 80mm . With 3 meter cable and 3-pin connector.	Box of 6, sterile, single use
EL-160-8	LiNA Gold Loop™ - 5mm Monopolar Endoscopic Loop for Laparoscopic Supracervical Hysterectomy & Myomectomy. Dimensions of loop: 160mm x 80mm . With 3 meter cable and 8mm ESU connector.	Box of 6, sterile, single use
EL-200-4	LiNA Gold Loop™ - 5mm Monopolar Endoscopic Loop for Laparoscopic Supracervical Hysterectomy & Myomectomy. Dimensions of loop: 200mm x 100mm . With 3 meter cable and 3-pin connector.	Box of 6, sterile, single use
EL-200-8	LiNA Gold Loop™ - 5mm Monopolar Endoscopic Loop for Laparoscopic Supracervical Hysterectomy & Myomectomy. Dimensions of loop: 200mm x 100mm . With 3 meter cable and 8mm ESU connector.	Box of 6, sterile, single use
EL-240-4	LiNA Gold Loop™ - 5mm Monopolar Endoscopic Loop for Laparoscopic Supracervical Hysterectomy & Myomectomy. Dimensions of loop: 240mm x 120mm . With 3 meter cable and 3-pin connector.	Box of 6, sterile, single use
EL-240-8	LiNA Gold Loop™ - 5mm Monopolar Endoscopic Loop for Laparoscopic Supracervical Hysterectomy & Myomectomy. Dimensions of loop: 240mm x 120mm . With 3 meter cable and 8mm ESU connector.	Box of 6, sterile, single use

