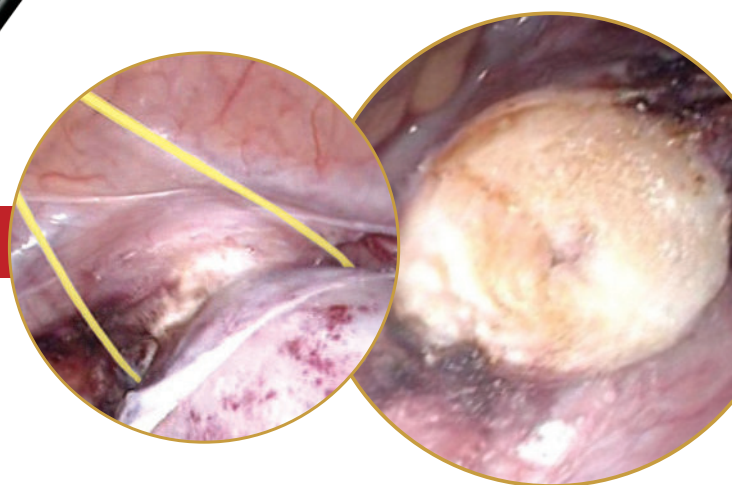


LiNA **Gold Loop**™

Laparoscopic Supracervical Hysterectomy (LSH)

Amputation in a few seconds



Innovation in Gynecology

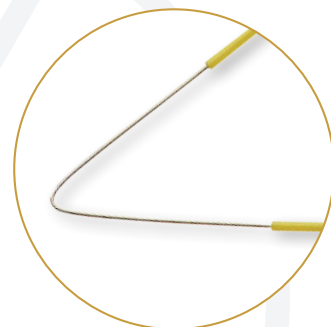
LiNA Gold Loop™

Laparoscopic Supracervical Hysterectomy (LSH)

Efficiency. Minimize procedure time by at least several minutes.

The LiNA Gold Loop™ is a safe and effective monopolar loop for sectioning of the uterus during laparoscopic supracervical hysterectomy (LSH).

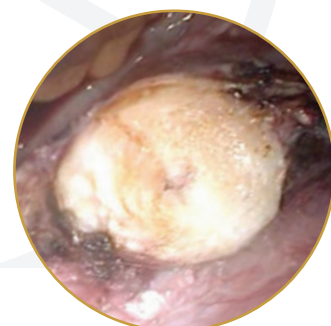
Cut and coagulate in one single step. Minimize the necessity for post coagulation of the surface by utilizing a blend mode (the recommended setting for the generator is: 100-130 W, Blend 1).



Versatility. 3 sizes available and no special generator required.

The LiNA Gold Loop™ is compatible with standard electrosurgical units to assure quick and easy setup.

3 meter cable with 3-pin monopolar plug or 8 mm connector.



Safety. Precise sectioning of the uterus.

Yellow insulation on the loop improves visibility on the monitor.

Provides a clean and coagulated surface.



Important:

Please refer to the Instruction for Use for complete instructions, contraindications, warnings and precautions.

Ordering Information:

LiNA Gold Loop™ CE 2274

| Product code | Description | UOM |
|--------------|---|-------------|
| EL-160-4 | LiNA Gold Loop™ – Endoscopic Monopolar Loop for LSH. Small Loop - 160 mm x 80 mm, 3-pin plug. Sterile, single use | Box of 6 ea |
| EL-160-8 | LiNA Gold Loop™ – Endoscopic Monopolar Loop for LSH. Small Loop - 160 mm x 80 mm, 8 mm connector. Sterile, single use | Box of 6 ea |
| EL-200-4 | LiNA Gold Loop™ – Endoscopic Monopolar Loop for LSH. Large Loop - 200 mm x 100 mm, 3-pin plug. Sterile, single use. | Box of 6 ea |
| EL-200-8 | LiNA Gold Loop™ – Endoscopic Monopolar Loop for LSH. Large Loop - 200 mm x 100 mm, 8 mm connector. Sterile, single use. | Box of 6 ea |
| EL-240-4 | LiNA Gold Loop™ – Endoscopic Monopolar Loop for LSH. X-Large Loop - 240 mm x 120 mm, 3-pin plug. Sterile, single use. | Box of 6 ea |
| EL-240-8 | LiNA Gold Loop™ – Endoscopic Monopolar Loop for LSH. X-Large Loop - 240 mm x 120 mm, 8 mm connector. Sterile, single use. | Box of 6 ea |

EU MDR 2017/745 device class: IIb. Name and number of the Notified Body: TUV Nord Polska Sp. z o.o. # 2274.

©2025 LiNA Medical AG. All rights reserved.

LiNA is a registered trademark of LiNA Medical in EU, US and CN.



LiNA Medical AG, Platz 3, 6039 Root D4 | Switzerland
Phone: +41 78 617 56 56, info@lina-medical.com | www.linamed.com



LiNA Medical Polska Sp. z o.o., Rolna 8A, Sady, 62-080 Tarnowo Podgórne | Poland
Phone: +48 61 222 21 21, info.poland@lina-medical.com | www.lina-medical.pl

EN ISO 13485:2016
Quality Management System

